

Requirements for artwork submissions

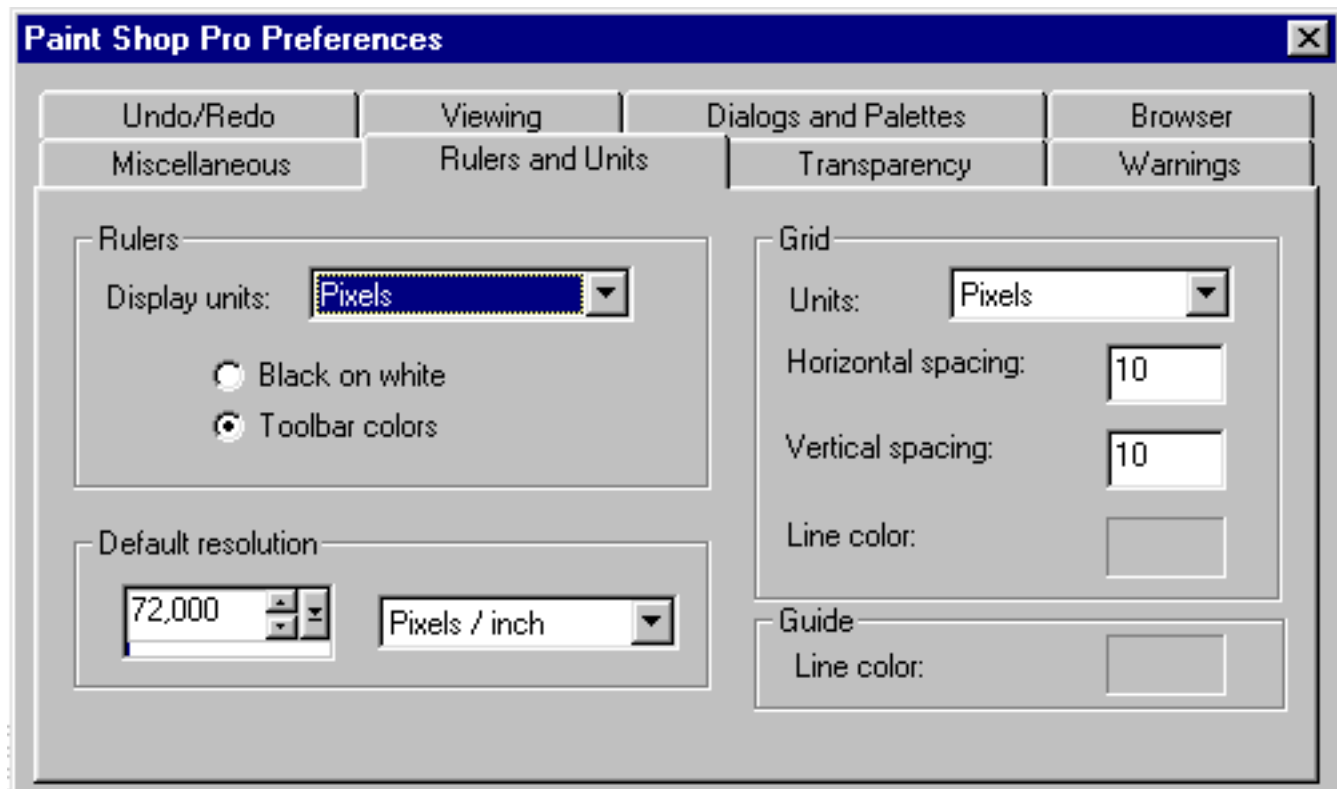
Resolution: 72 pixels per Inch,
otherwise the picture will look distorted or pixels are missing;

Mode: Indexed , 256 colors
using one of 3 possible WorldsAway compatible color tables;
for heads usually 10 x 5 x 1 (10 face, 5 hair, 1 eyes)

File format: PICT preferred, PCX;

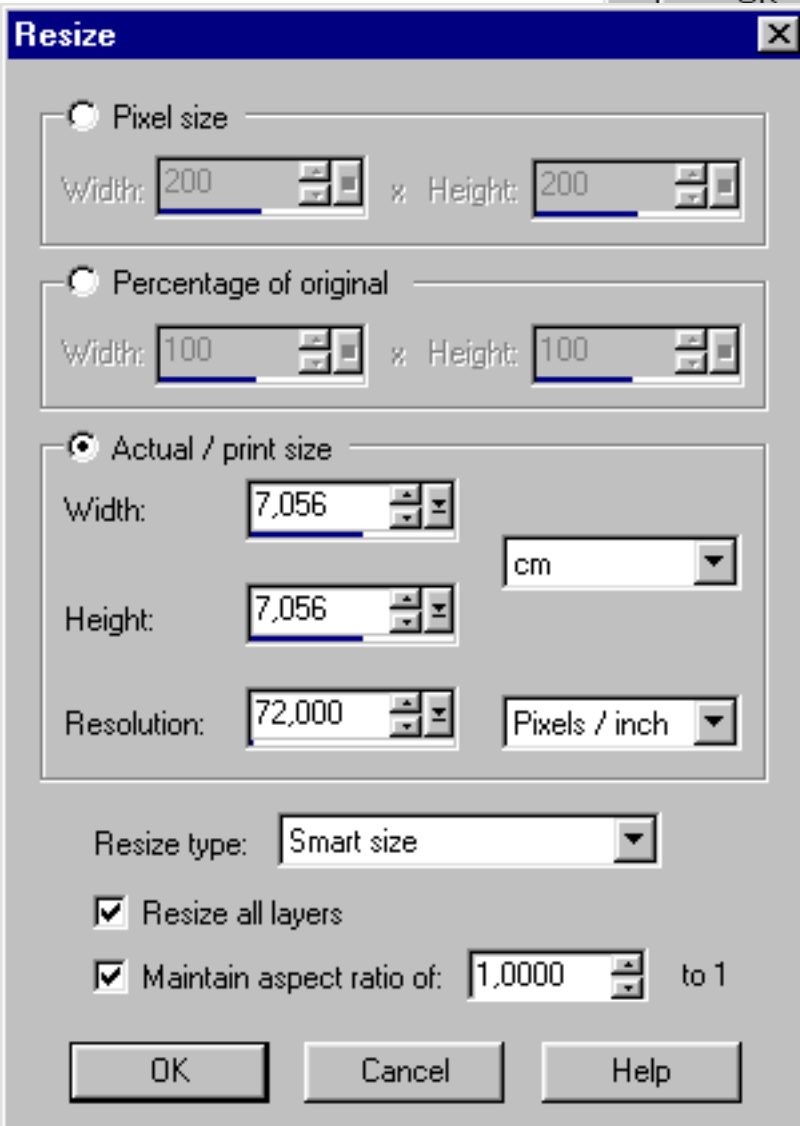
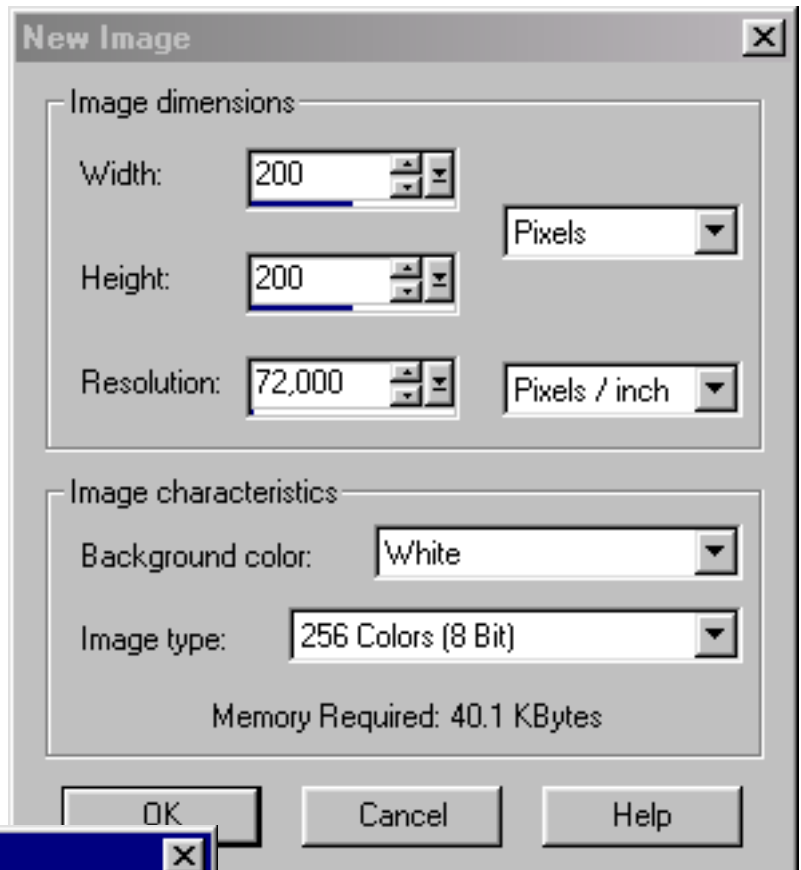
All head views should be in 1 file. In case the artwork needs to be fixed, it is easier this way since there is only 1 file to open. If heads are mirrored in the side views, only one view is required, left or right.

It is helpful as well if you add small remarks to the views, like „front glad“, „left mad“ and so on. The white color outside your artwork should be Transparent White. Transparent White or Black used in your artwork will cause transparent holes.

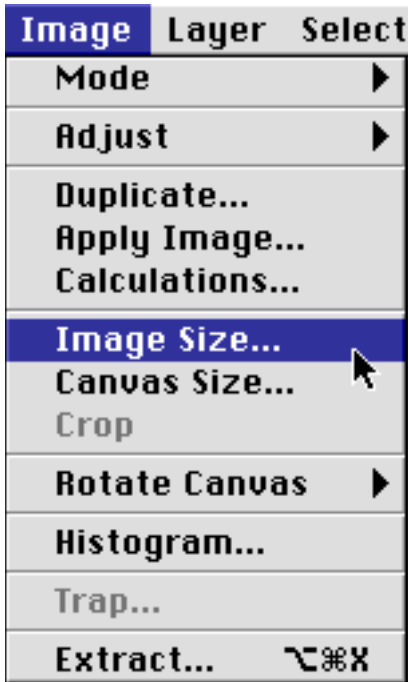


Paint Shop Pro 7 Preferences
Resolution 72 ppi

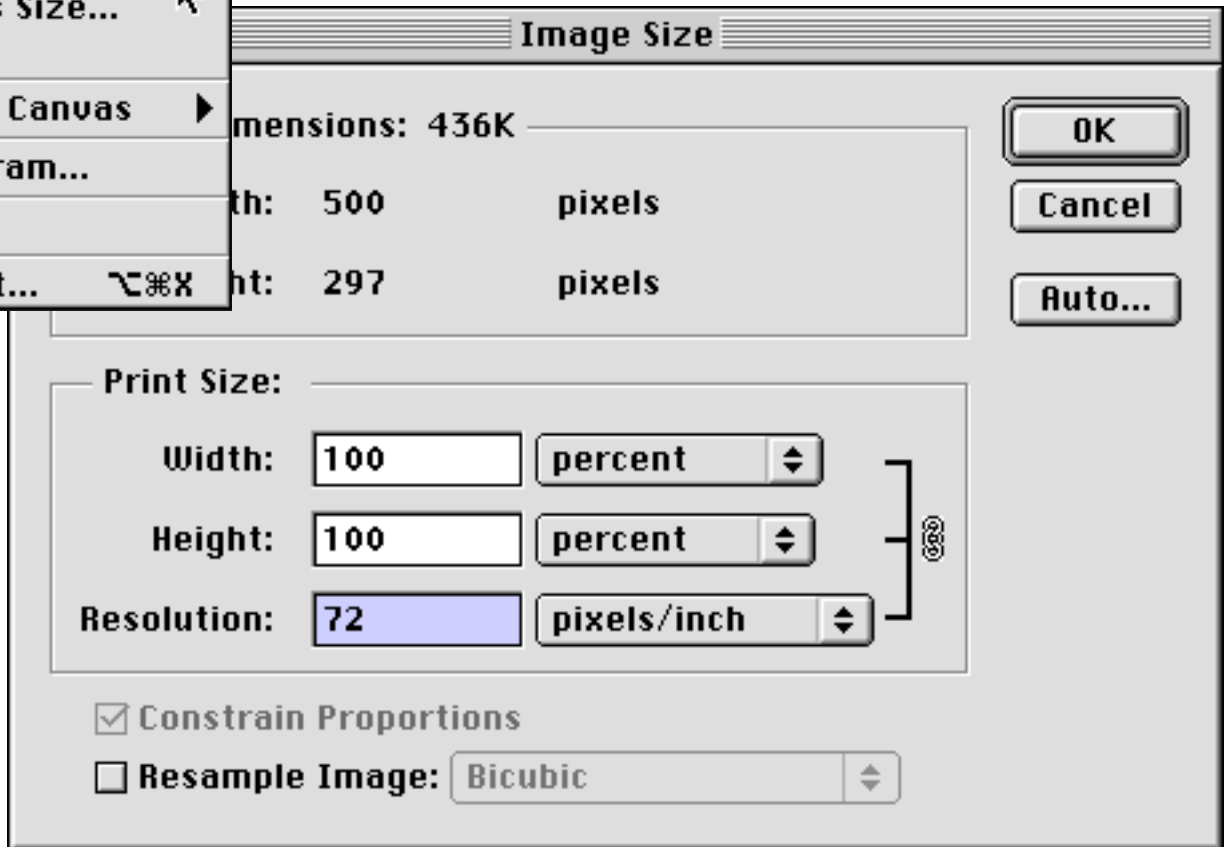
Open a new image in PSP



Resize in PSP

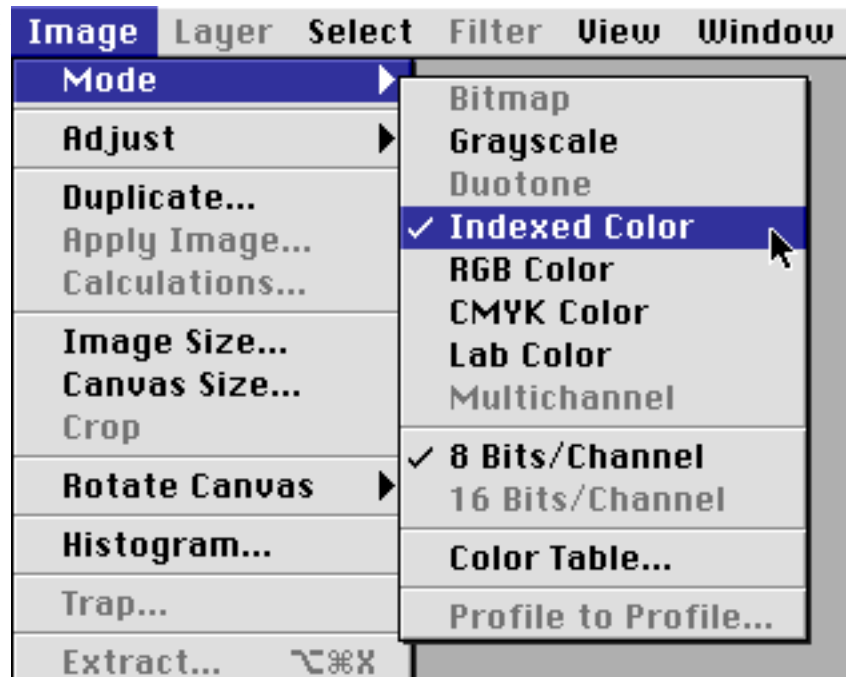


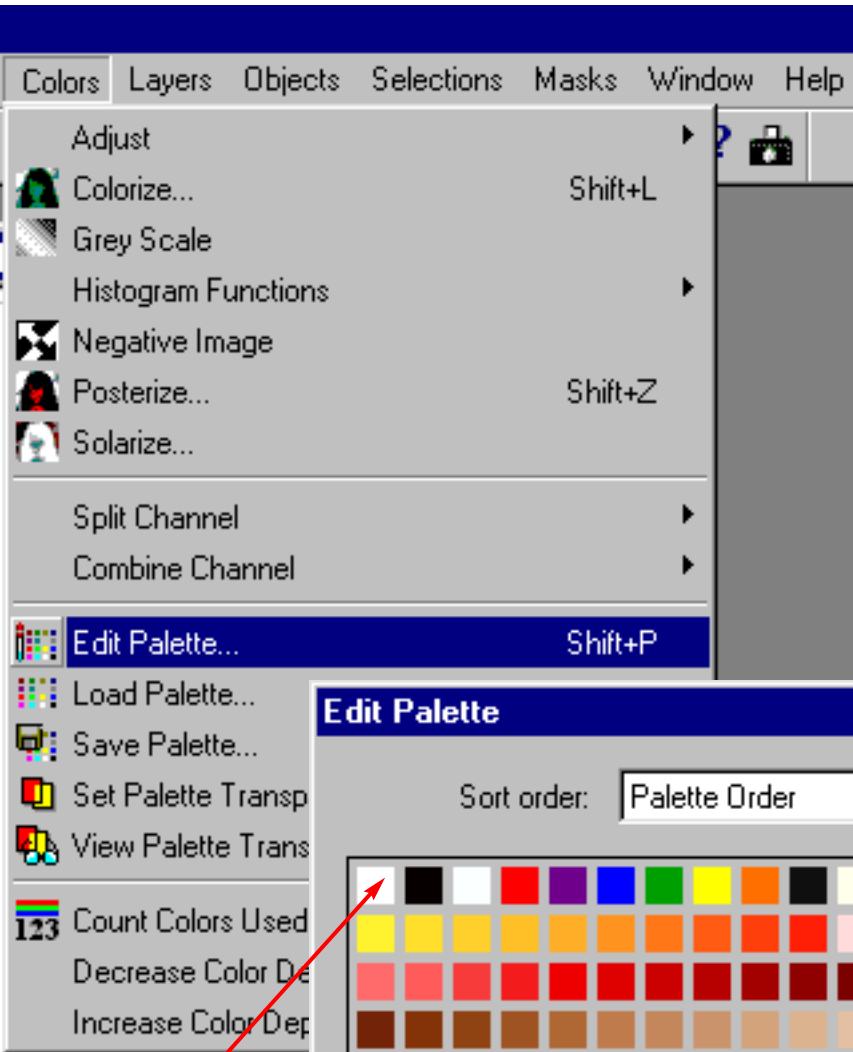
Resolution settings in Photoshop 5.5



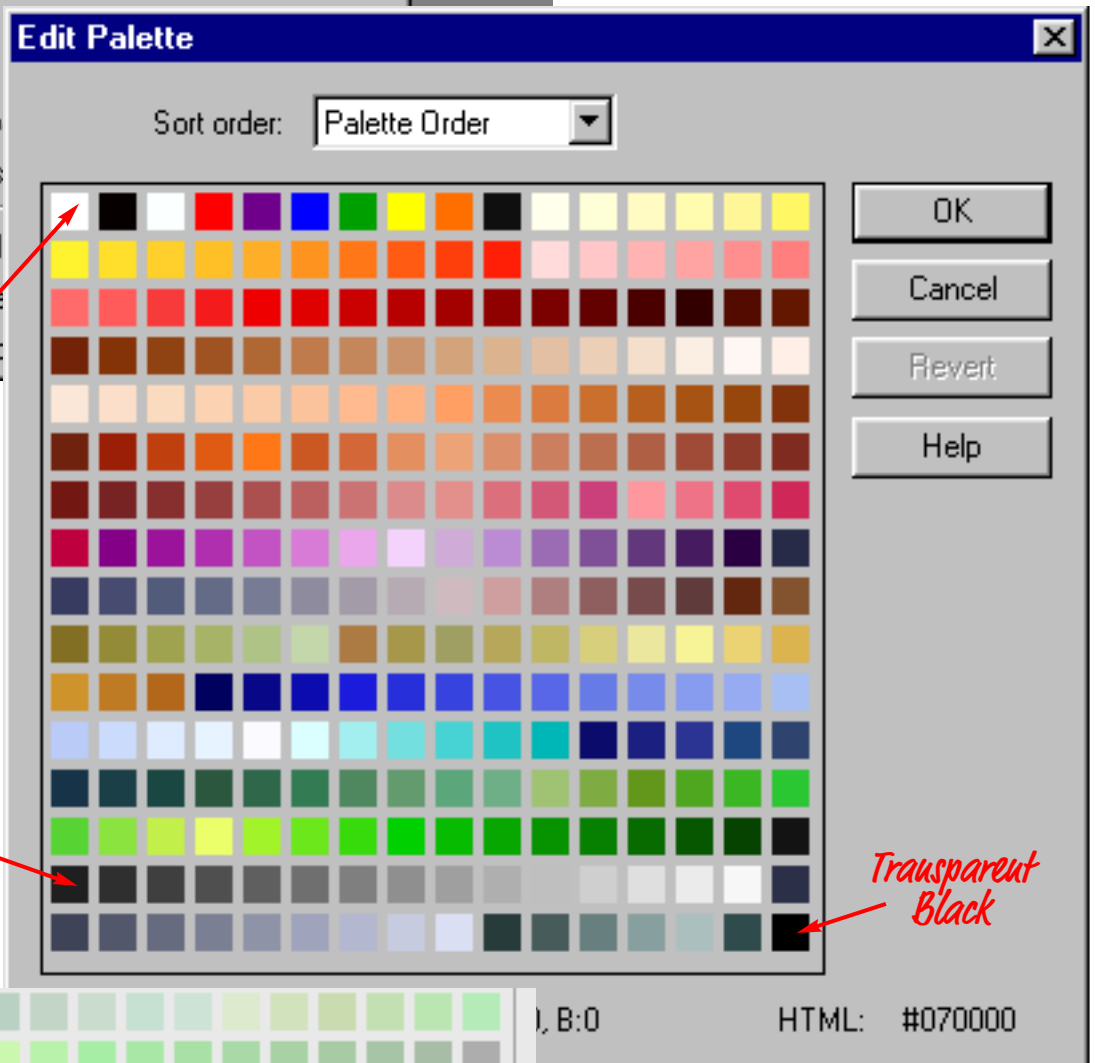
Photoshop 5.5 Preferences

Indexed Color Mode Photoshop 5.5





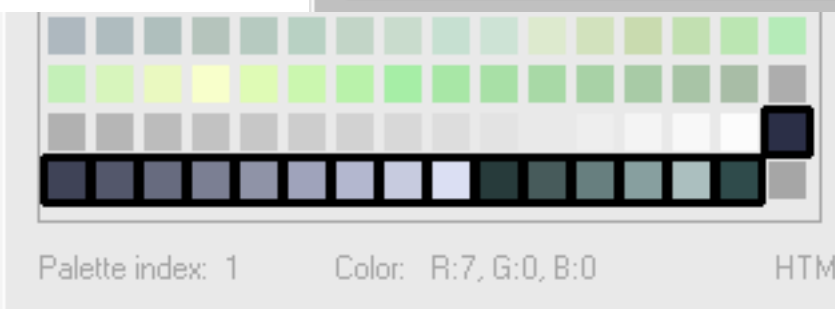
Color Table in Paint Shop Pro



Transparent White

Outline color

Transparent Black



These are the "Design Colors"
10 x 5 x 1 for repaintable heads
and many objects

The image shows a Photoshop 'Indexed Color' dialog box in the background and a 'Color Table' dialog box in the foreground. The 'Indexed Color' dialog has 'Palette: Custom...', 'Colors: 256', 'Forced: None', and 'Options' with 'Matte: None', 'Dither: None', and 'Amount: %'. The 'Color Table' dialog has 'Table: Custom' and a 20x10 grid of color swatches. Red arrows point to specific swatches in the grid with handwritten labels: 'Transparent White' points to the top-left swatch, 'Outline color' points to a dark grey swatch in the bottom row, and 'Transparent Black' points to the bottom-right swatch. A third 'Color Table' dialog is partially visible at the bottom left.

Transparent White

Outline color

Transparent Black

Color Table in Photoshop

These are the "Design Colors" 10 x 5 x 1 for repaintable heads and many objects